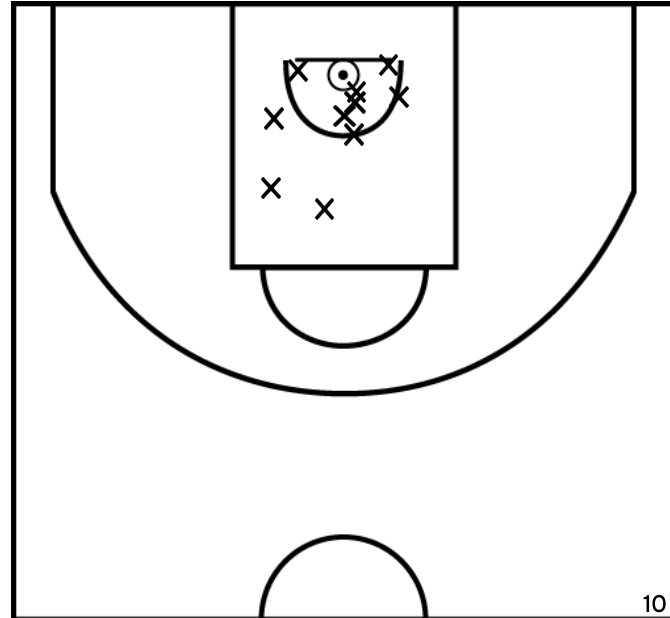


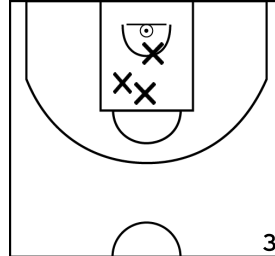
Rencontre: 36 Date: 15/10/22 Heure: 17:00

Arbitre: PAITIER P GERARD A

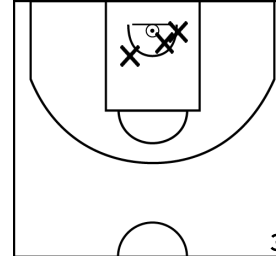
ÉQUIPE BALAZE JA - 2 (A)



PÉRIODE 1



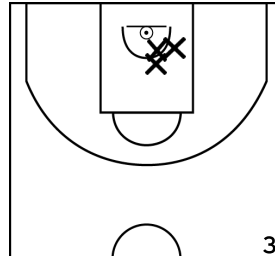
PÉRIODE 3



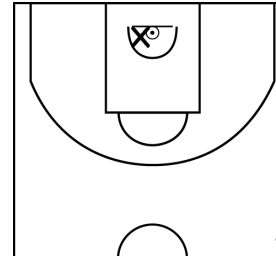
PROLONGATIONS



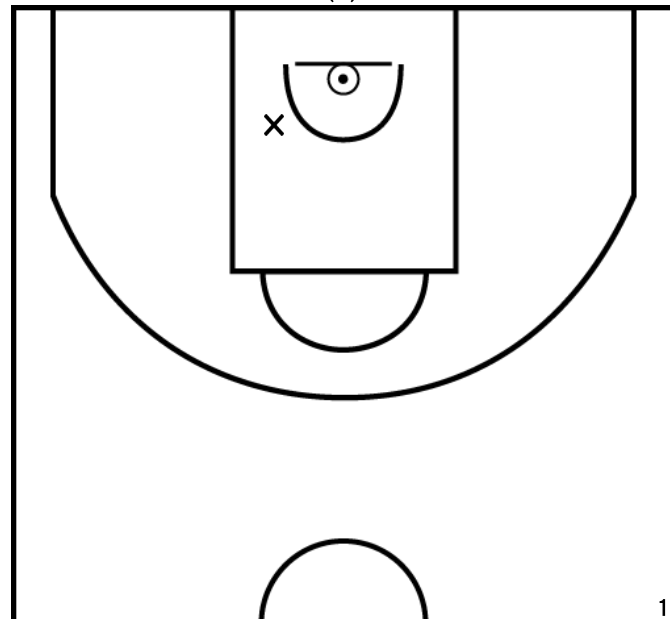
PÉRIODE 2



PÉRIODE 4



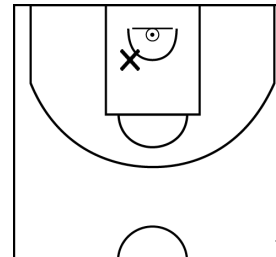
GAUTIER M. - BALAZE JA - 2 (A)



PÉRIODE 1



PÉRIODE 3



PROLONGATIONS



PÉRIODE 2



PÉRIODE 4



Rencontre: 36 Date: 15/10/22 Heure: 17:00

Arbitre: PAITIER P GERARD A

CHANTREL L. - BALAZE JA - 2 (A)



PÉRIODE 1



PÉRIODE 3



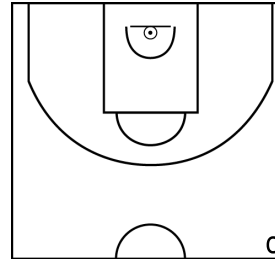
PROLONGATIONS



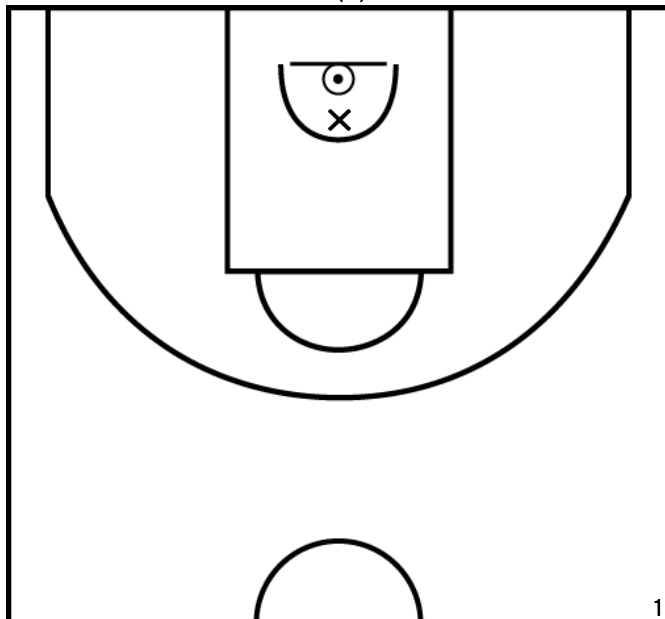
PÉRIODE 2



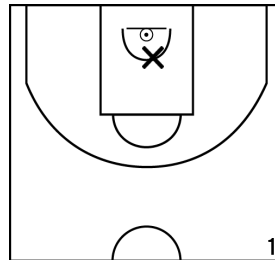
PÉRIODE 4



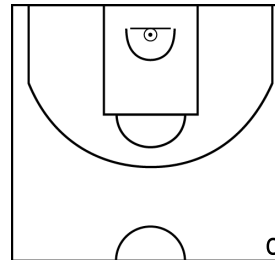
JEHANNIN A. - BALAZE JA - 2 (A)



PÉRIODE 1



PÉRIODE 3



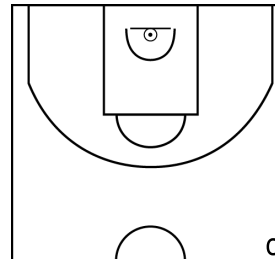
PROLONGATIONS



PÉRIODE 2



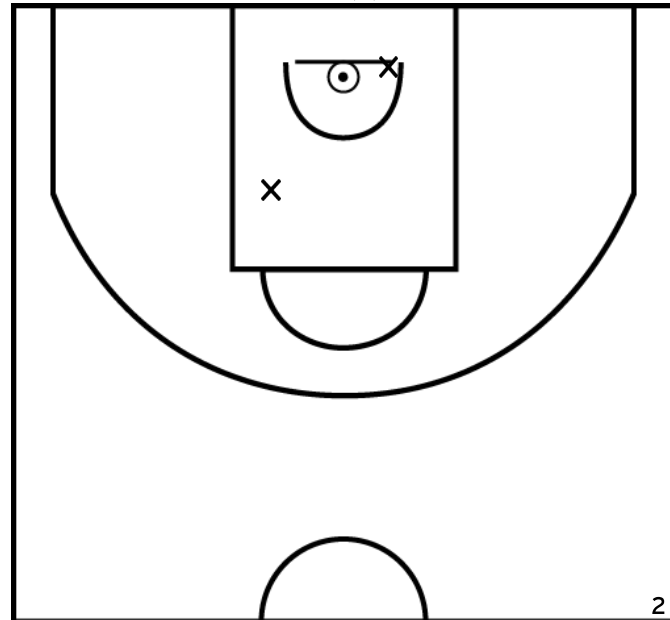
PÉRIODE 4



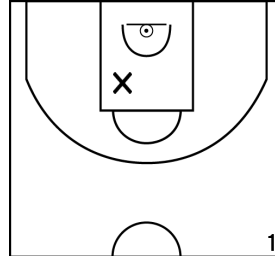
Rencontre: 36 Date: 15/10/22 Heure: 17:00

Arbitre: PAITIER P GERARD A

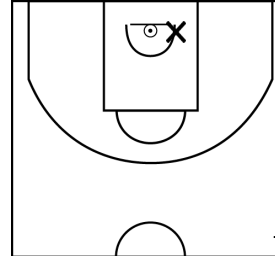
HOFFMANN E. - BALAZE JA - 2 (A)



PÉRIODE 1



PÉRIODE 3



PROLONGATIONS



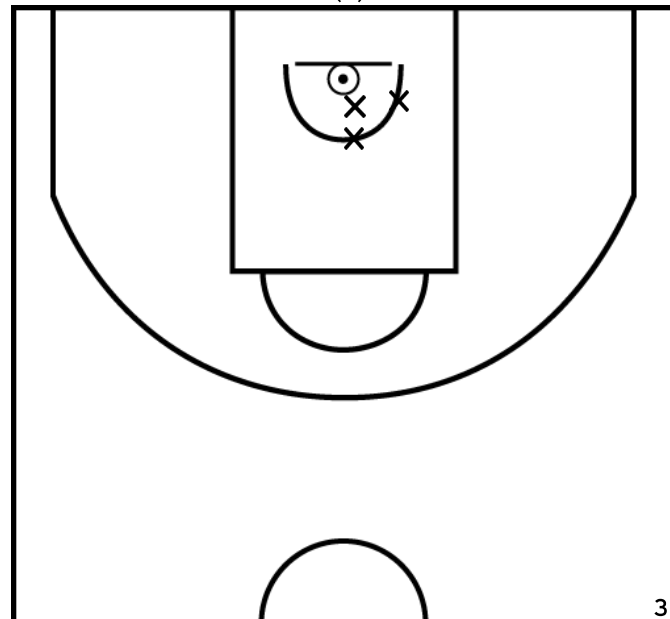
PÉRIODE 2



PÉRIODE 4



BOSSARD G. - BALAZE JA - 2 (A)



PÉRIODE 1



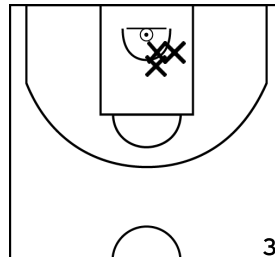
PÉRIODE 3



PROLONGATIONS



PÉRIODE 2



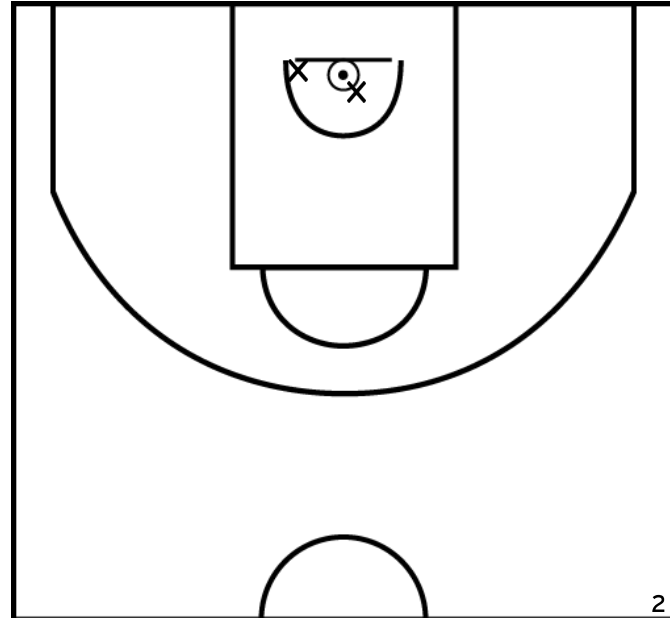
PÉRIODE 4



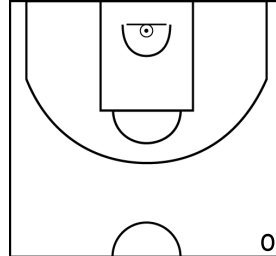
Rencontre: 36 Date: 15/10/22 Heure: 17:00

Arbitre: PAITIER P GERARD A

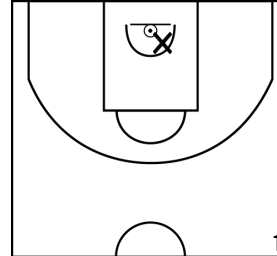
RIMBAULT L. - BALAZE JA - 2 (A)



PÉRIODE 1



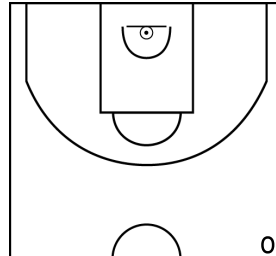
PÉRIODE 3



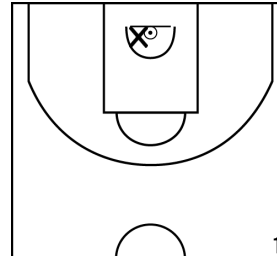
PROLONGATIONS



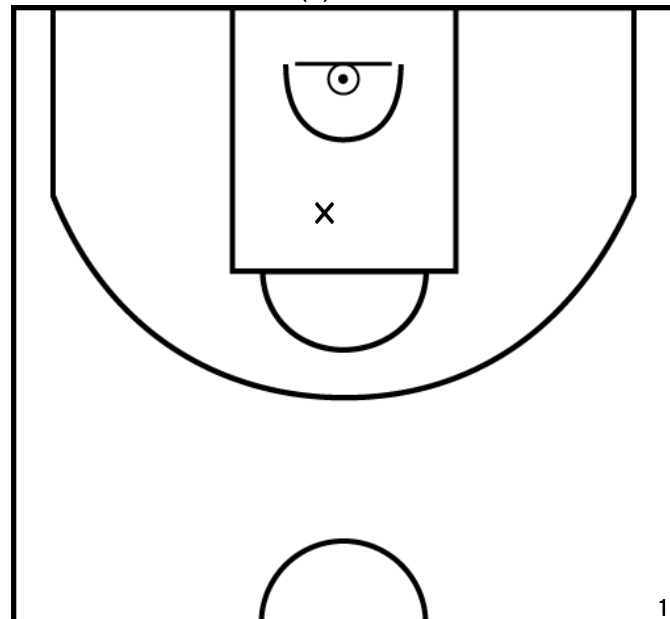
PÉRIODE 2



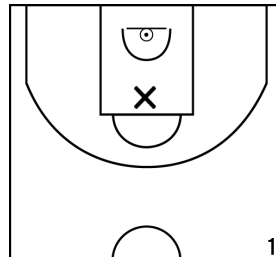
PÉRIODE 4



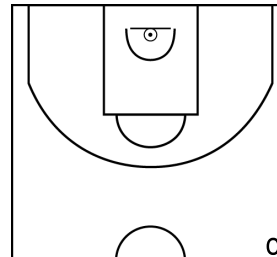
DUGAS P. - BALAZE JA - 2 (A)



PÉRIODE 1



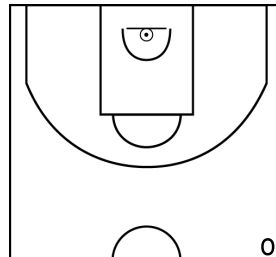
PÉRIODE 3



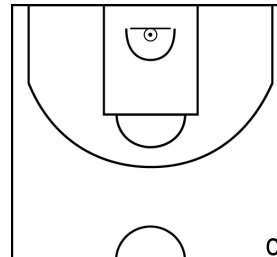
PROLONGATIONS



PÉRIODE 2



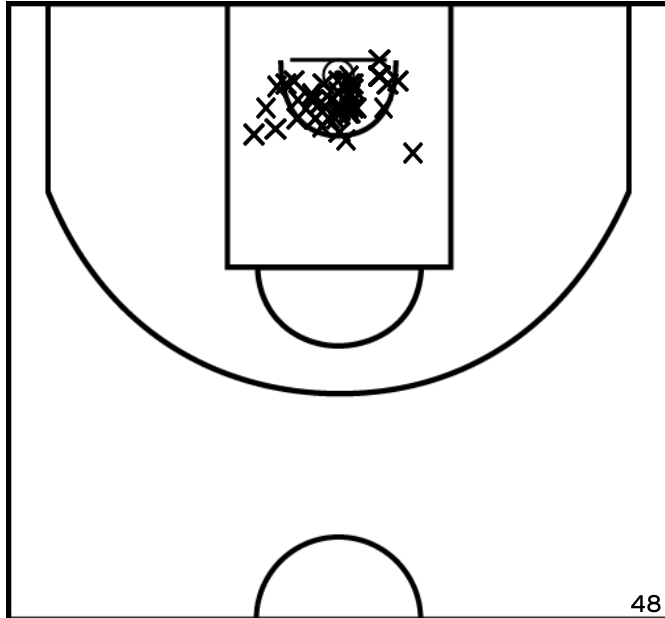
PÉRIODE 4



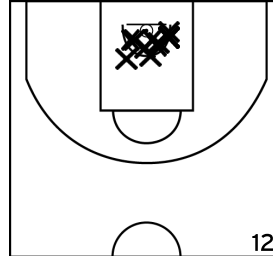
Rencontre: 36 Date: 15/10/22 Heure: 17:00

Arbitre: PAITIER P GERARD A

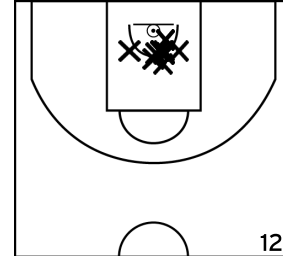
ÉQUIPE IE - CTC HAUTS DE VILAINE - CHATEAUBOURG BC (B)



PÉRIODE 1



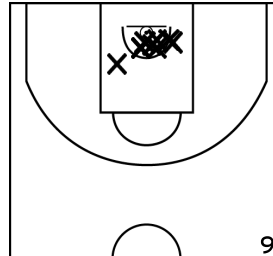
PÉRIODE 3



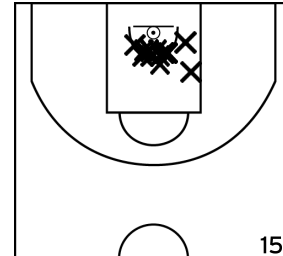
PROLONGATIONS



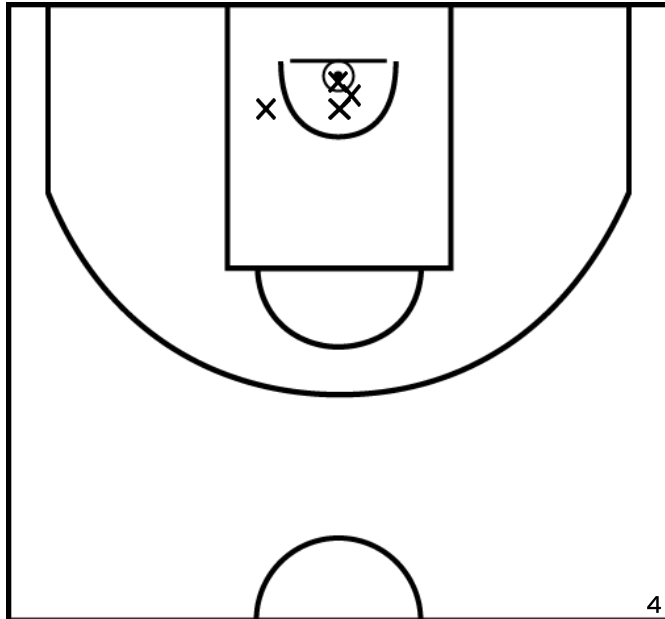
PÉRIODE 2



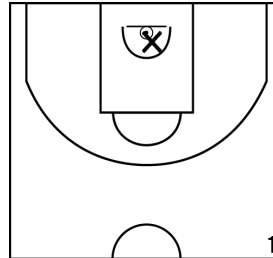
PÉRIODE 4



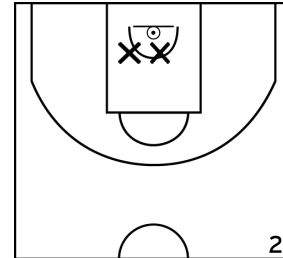
GALVEZ A. - IE - CTC HAUTS DE VILAINE - CHATEAUBOURG BC (B)



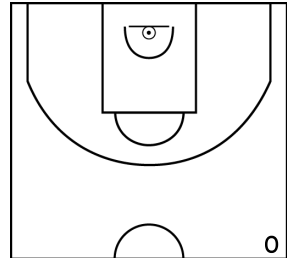
PÉRIODE 1



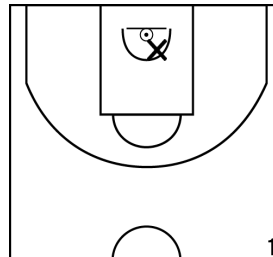
PÉRIODE 3



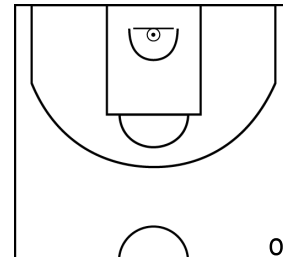
PROLONGATIONS



PÉRIODE 2



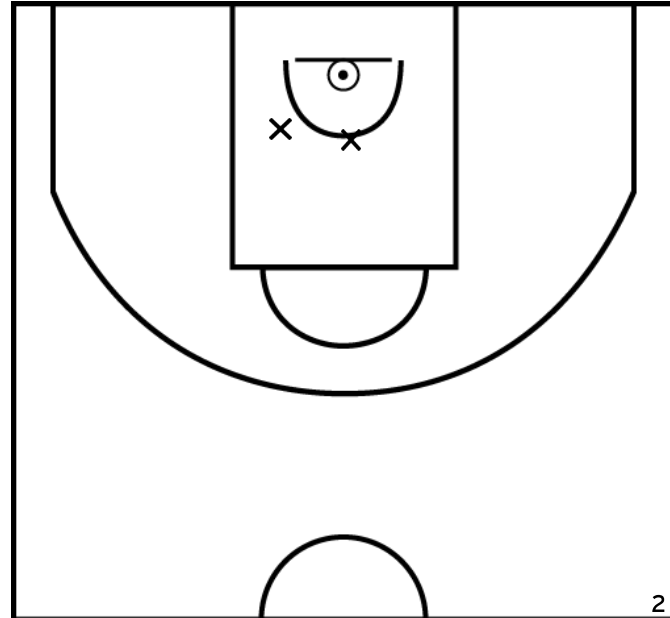
PÉRIODE 4



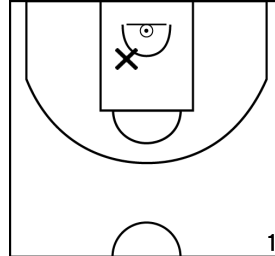
Rencontre: 36 Date: 15/10/22 Heure: 17:00

Arbitre: PAITIER P GERARD A

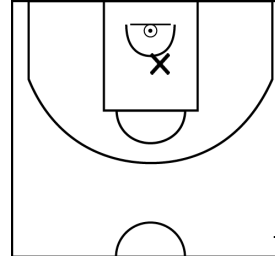
ROYANT-COLLIAS E. - IE - CTC HAUTS DE VILAINE - CHATEAUBOURG BC (B)



PÉRIODE 1



PÉRIODE 3



PROLONGATIONS



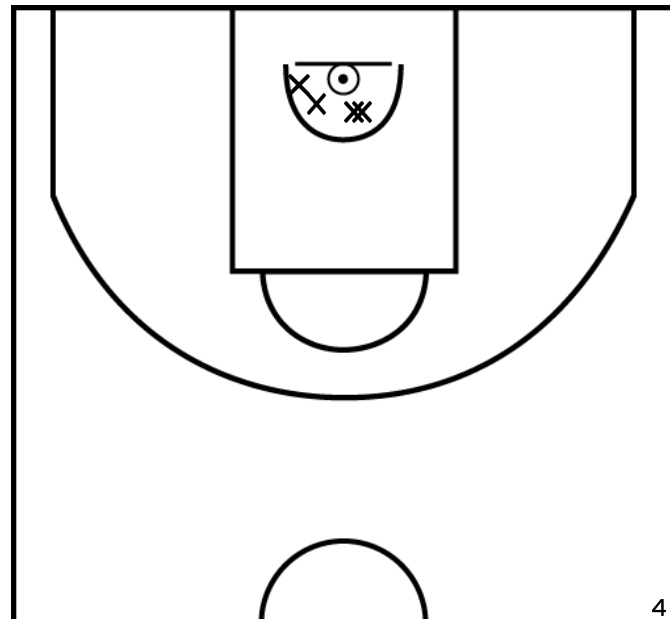
PÉRIODE 2



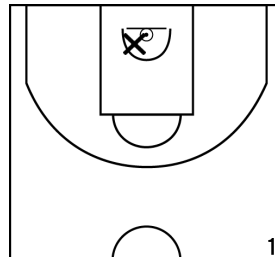
PÉRIODE 4



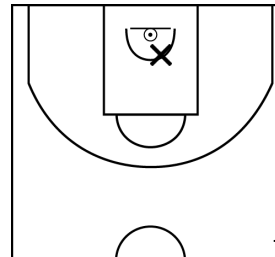
CARRE-GRANIER N. - IE - CTC HAUTS DE VILAINE - CHATEAUBOURG BC (B)



PÉRIODE 1



PÉRIODE 3



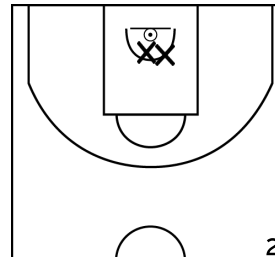
PROLONGATIONS



PÉRIODE 2



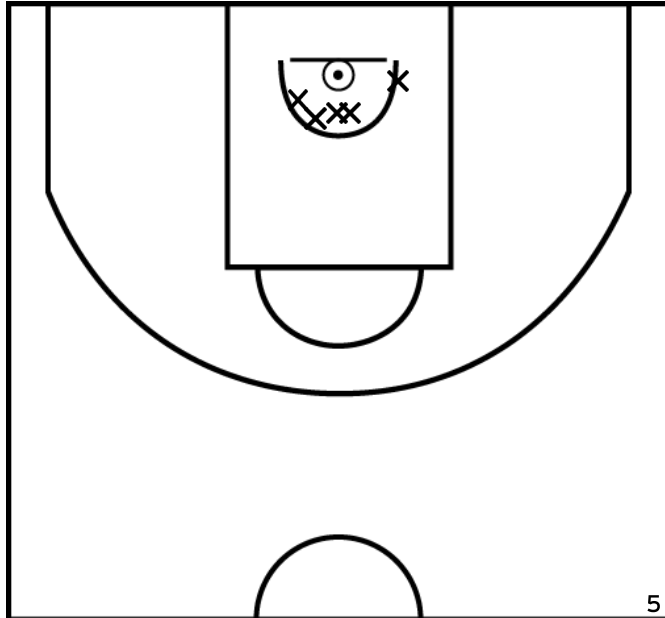
PÉRIODE 4



Rencontre: 36 Date: 15/10/22 Heure: 17:00

Arbitre: PAITIER P GERARD A

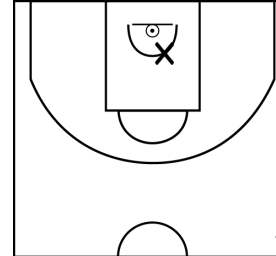
ROCHEFORT G. - IE - CTC HAUTS DE VILAINE - CHATEAUBOURG BC (B)



PÉRIODE 1



PÉRIODE 3



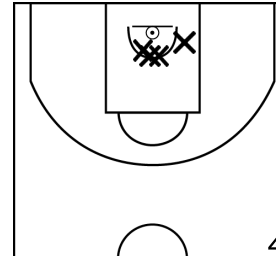
PROLONGATIONS



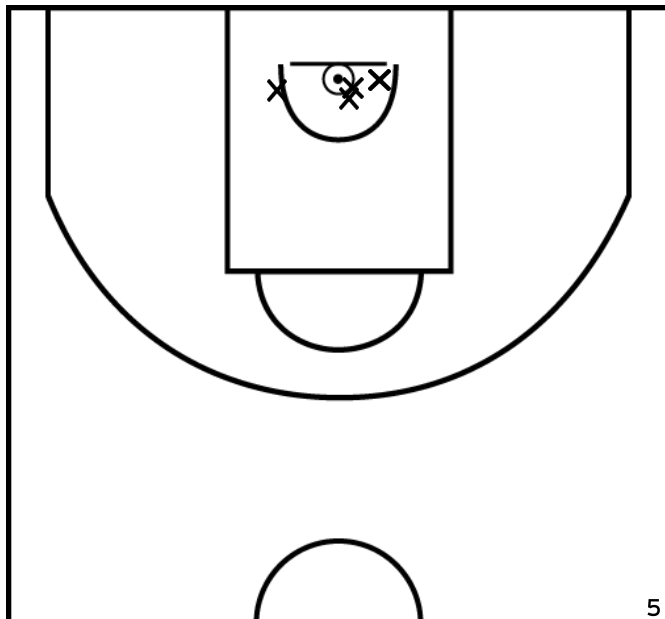
PÉRIODE 2



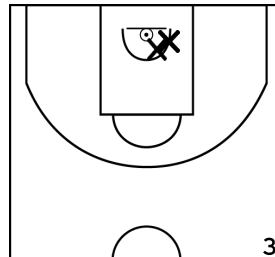
PÉRIODE 4



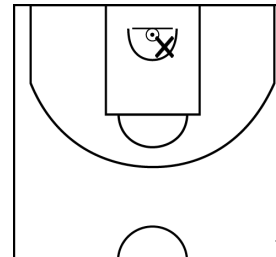
VIEL-DESBLE N. - IE - CTC HAUTS DE VILAINE - CHATEAUBOURG BC (B)



PÉRIODE 1



PÉRIODE 3



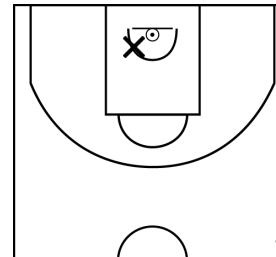
PROLONGATIONS



PÉRIODE 2



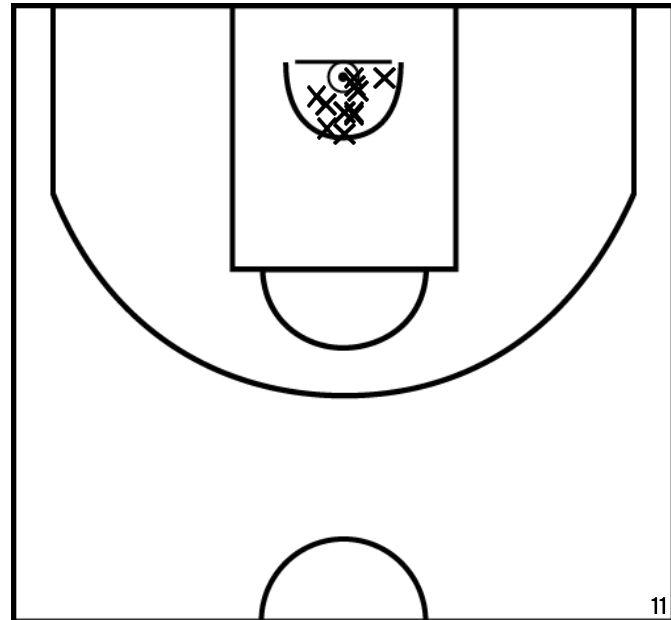
PÉRIODE 4



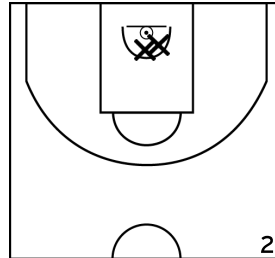
Rencontre: 36 Date: 15/10/22 Heure: 17:00

Arbitre: PAITIER P GERARD A

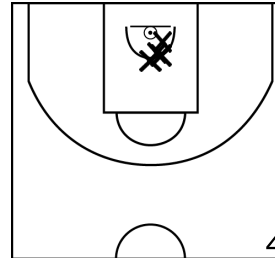
BERTIN F. - IE - CTC HAUTS DE VILAINE - CHATEAUBOURG BC (B)



PÉRIODE 1



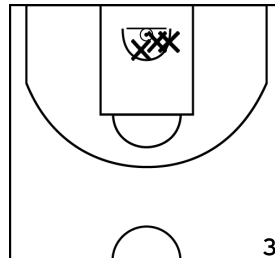
PÉRIODE 3



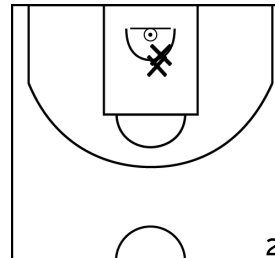
PROLONGATIONS



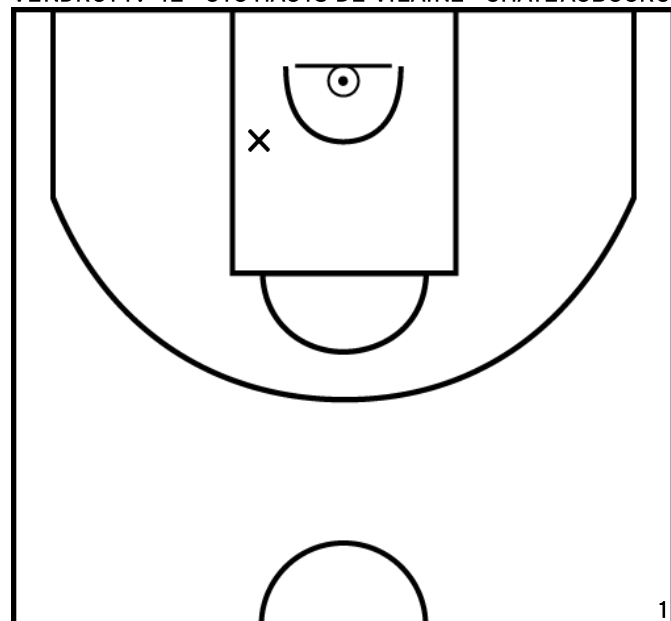
PÉRIODE 2



PÉRIODE 4



VENDROT P. - IE - CTC HAUTS DE VILAINE - CHATEAUBOURG BC (B)



PÉRIODE 1



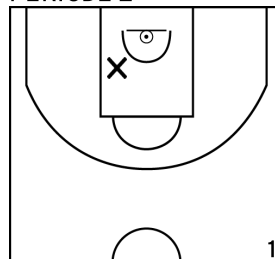
PÉRIODE 3



PROLONGATIONS



PÉRIODE 2



PÉRIODE 4

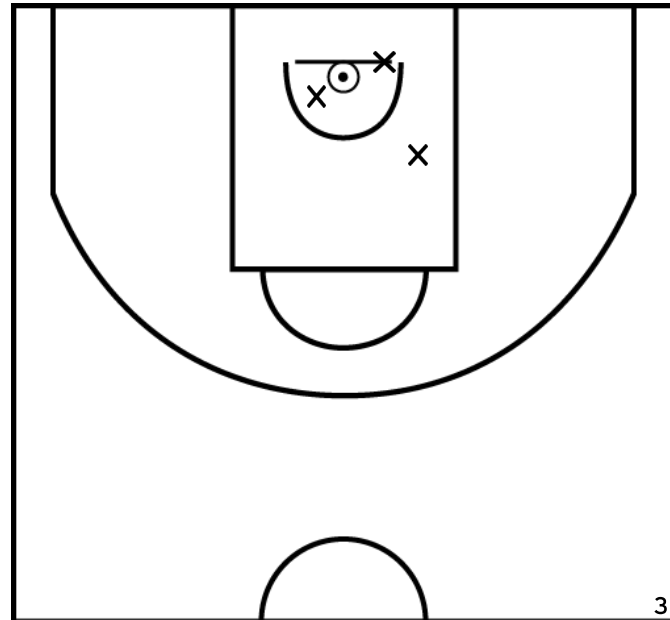




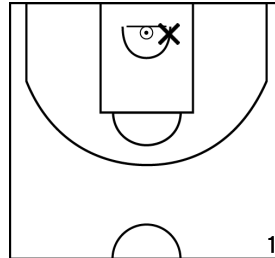
Rencontre: 36 Date: 15/10/22 Heure: 17:00

Arbitre: PAITIER P GERARD A

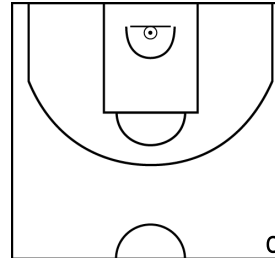
DELAMARRE C. - IE - CTC HAUTS DE VILAINE - CHATEAUBOURG BC (B)



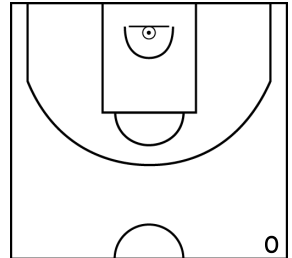
PÉRIODE 1



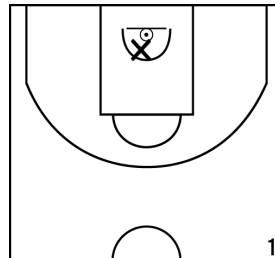
PÉRIODE 3



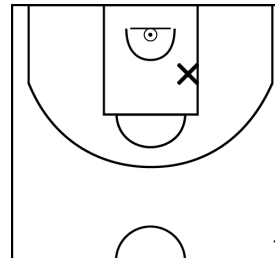
PROLONGATIONS



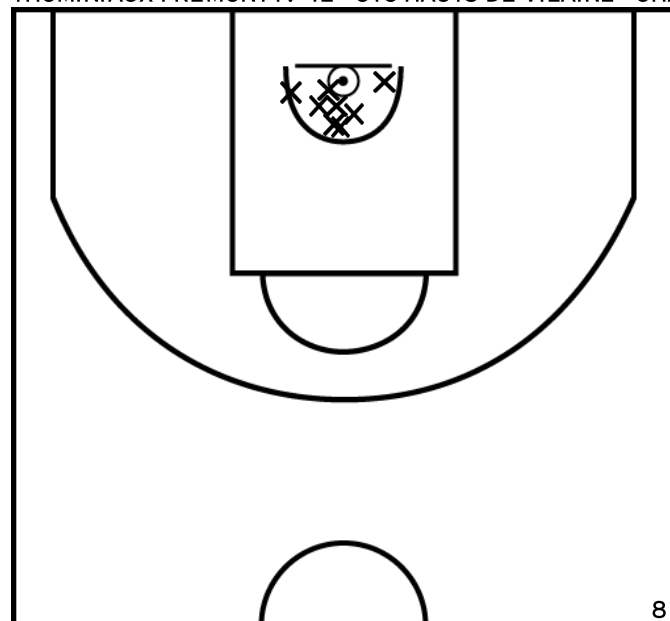
PÉRIODE 2



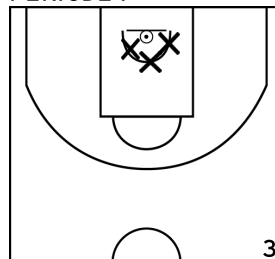
PÉRIODE 4



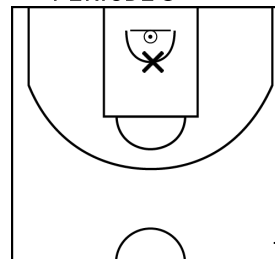
THOMINIAUX-FREMONT P. - IE - CTC HAUTS DE VILAINE - CHATEAUBOURG BC (B)



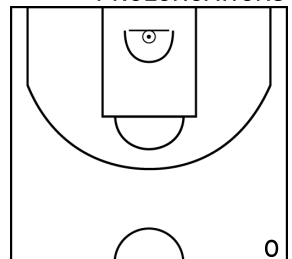
PÉRIODE 1



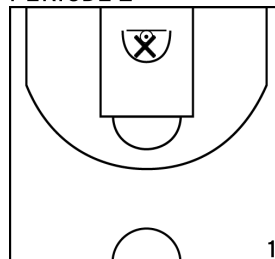
PÉRIODE 3



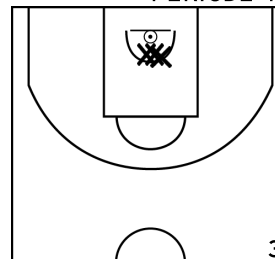
PROLONGATIONS



PÉRIODE 2

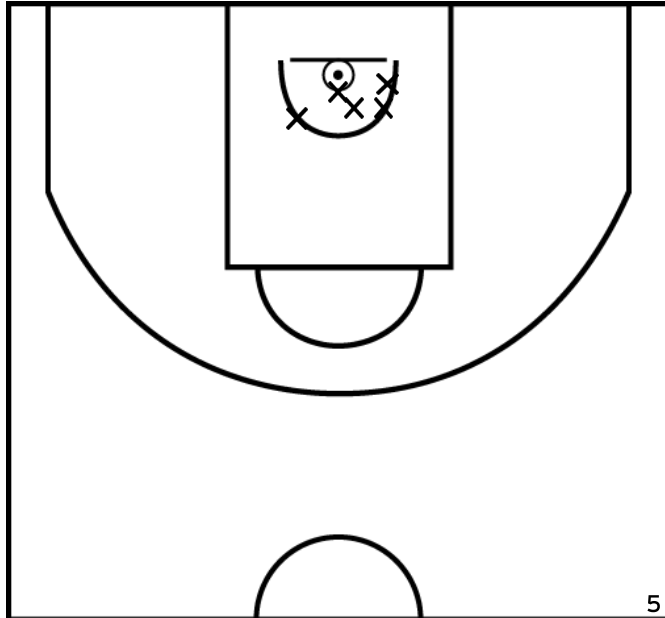


PÉRIODE 4



Rencontre: 36 Date: 15/10/22 Heure: 17:00  
 Arbitre: PAITIER P GERARD A

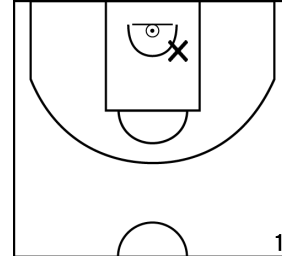
ALLIOU M. - IE - CTC HAUTS DE VILAINE - CHATEAUBOURG BC (B)



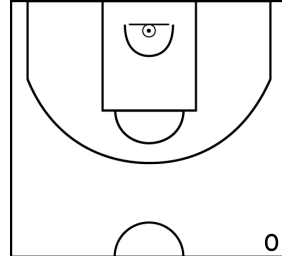
PÉRIODE 1



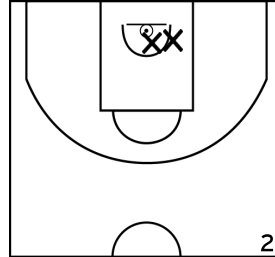
PÉRIODE 3



PROLONGATIONS



PÉRIODE 2



PÉRIODE 4

