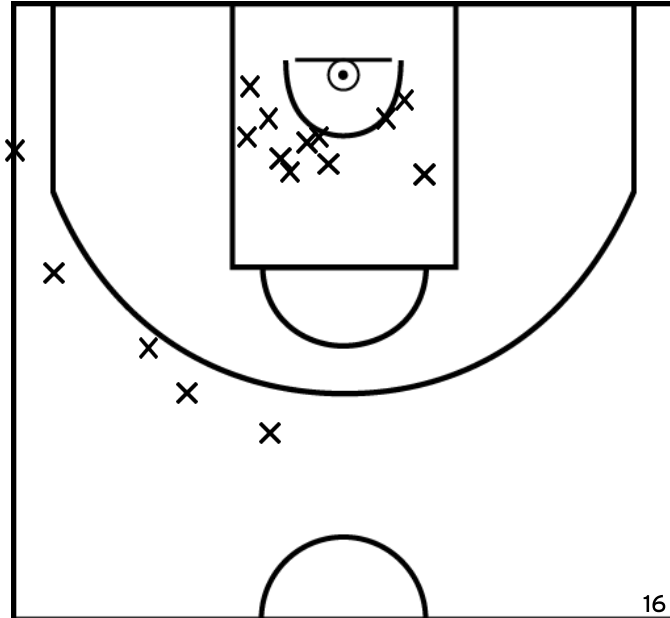


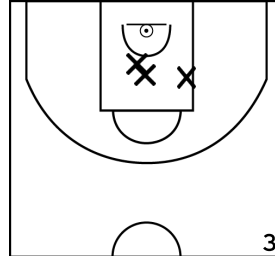
Rencontre: 247 Date: 06/05/23 Heure: 20:15

Arbitre: LBOUC A

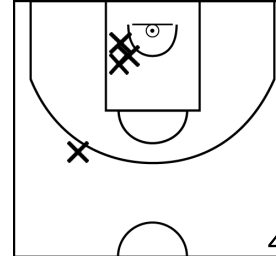
ÉQUIPE IE - CTC HAUTS DE VILAINE - CHATEAUBOURG BC (A)



PÉRIODE 1



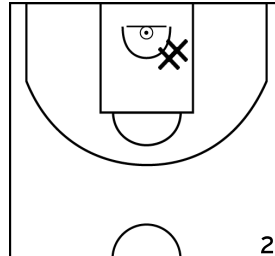
PÉRIODE 3



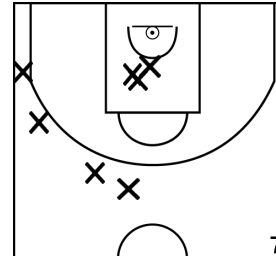
PROLONGATIONS



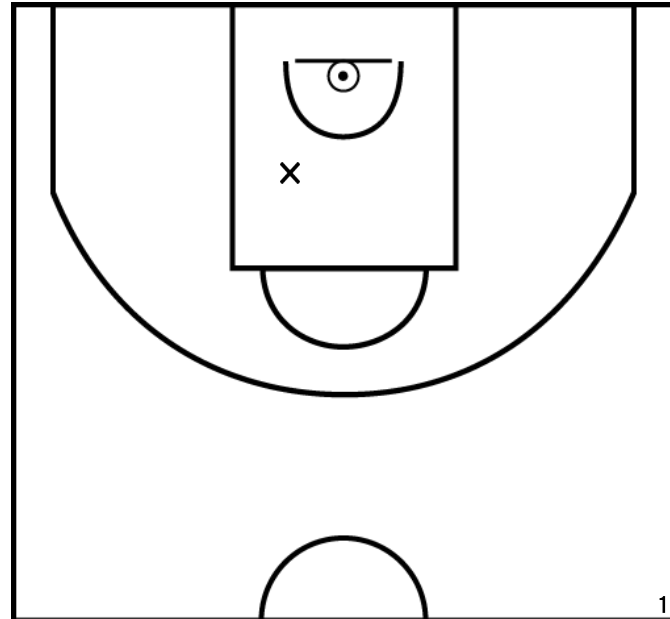
PÉRIODE 2



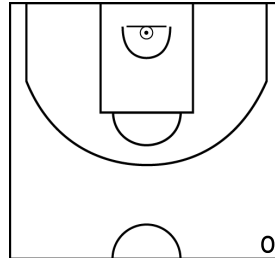
PÉRIODE 4



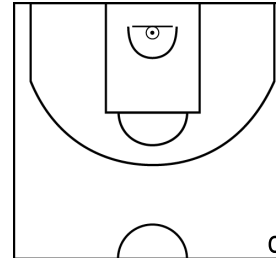
LEBOUC P. - IE - CTC HAUTS DE VILAINE - CHATEAUBOURG BC (A)



PÉRIODE 1



PÉRIODE 3



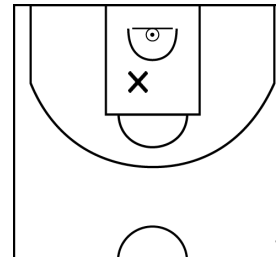
PROLONGATIONS



PÉRIODE 2



PÉRIODE 4



Rencontre: 247 Date: 06/05/23 Heure: 20:15

Arbitre: LEBOUCA A

LEBOUC E. - IE - CTC HAUTS DE VILAINE - CHATEAUBOURG BC (A)



PÉRIODE 1



PÉRIODE 3



PROLONGATIONS



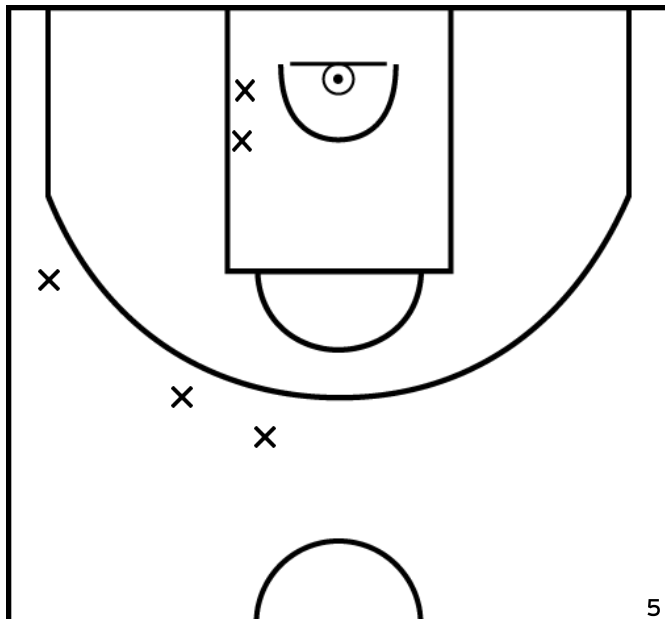
PÉRIODE 2



PÉRIODE 4



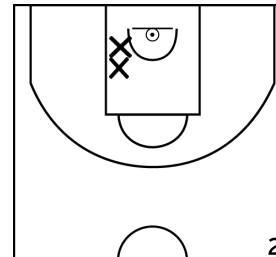
GERAULT E. - IE - CTC HAUTS DE VILAINE - CHATEAUBOURG BC (A)



PÉRIODE 1



PÉRIODE 3



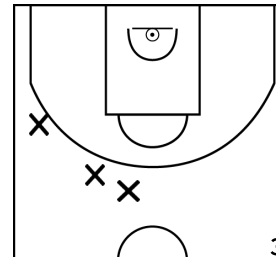
PROLONGATIONS



PÉRIODE 2



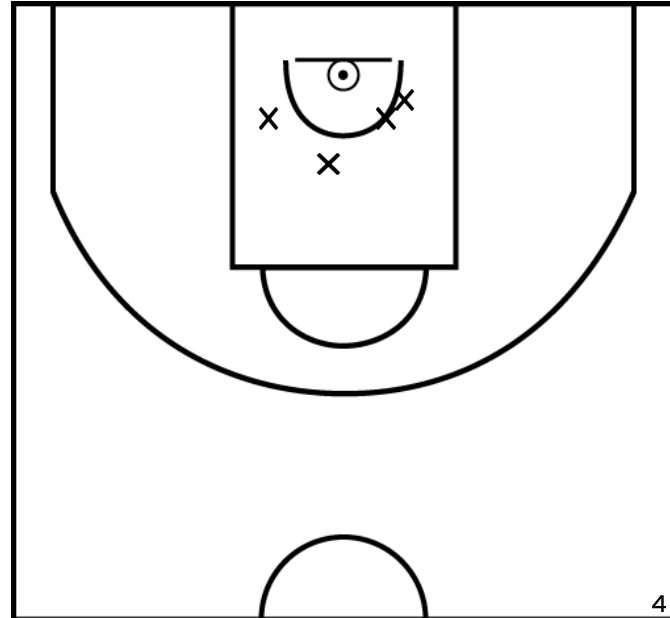
PÉRIODE 4



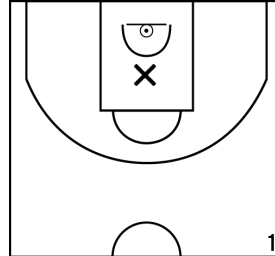
Rencontre: 247 Date: 06/05/23 Heure: 20:15

Arbitre: LBOUC A

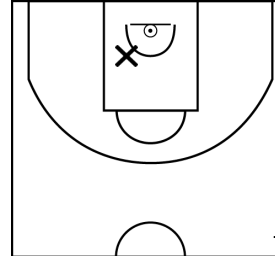
SIMON Q. - IE - CTC HAUTS DE VILAINE - CHATEAUBOURG BC (A)



PÉRIODE 1



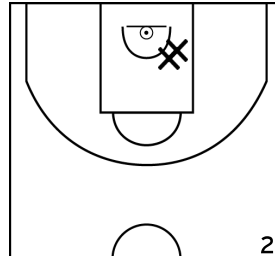
PÉRIODE 3



PROLONGATIONS



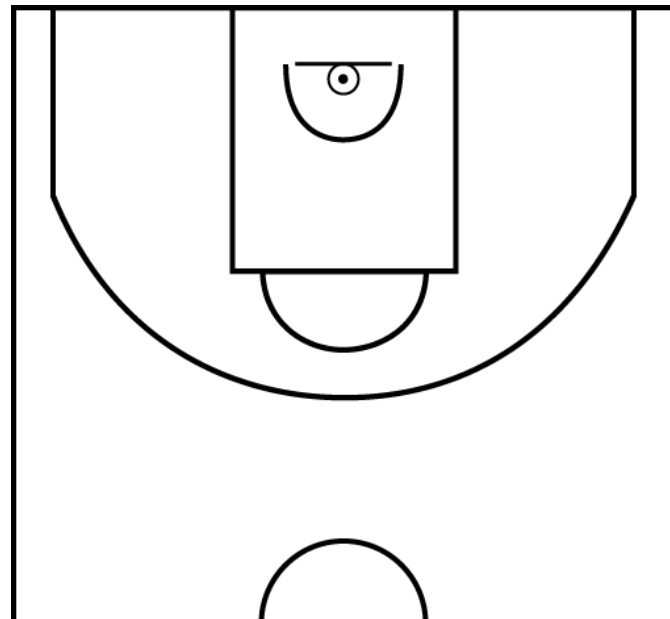
PÉRIODE 2



PÉRIODE 4



GUILLEMET B. - IE - CTC HAUTS DE VILAINE - CHATEAUBOURG BC (A)



PÉRIODE 1



PÉRIODE 3



PROLONGATIONS



PÉRIODE 2



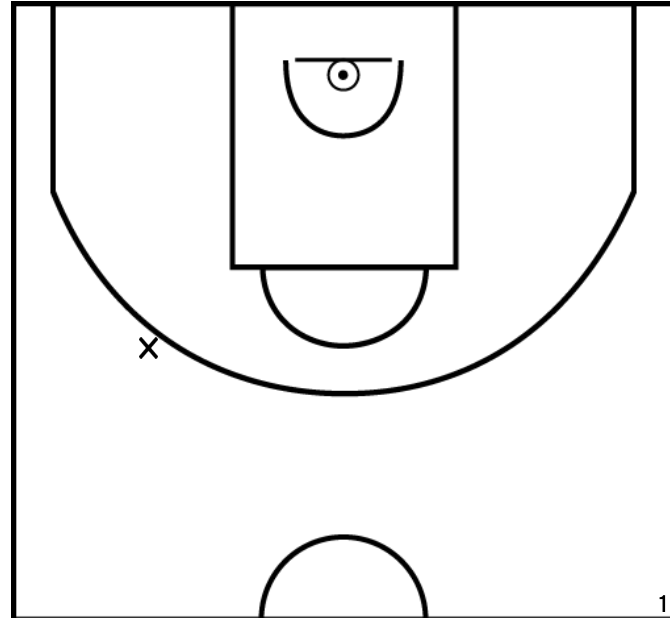
PÉRIODE 4



Rencontre: 247 Date: 06/05/23 Heure: 20:15

Arbitre: LEBOUCA

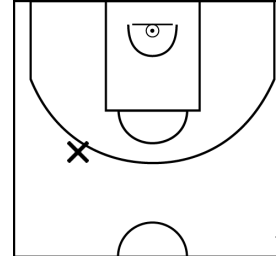
SIMON L. - IE - CTC HAUTS DE VILAINE - CHATEAUBOURG BC (A)



PÉRIODE 1



PÉRIODE 3



PROLONGATIONS



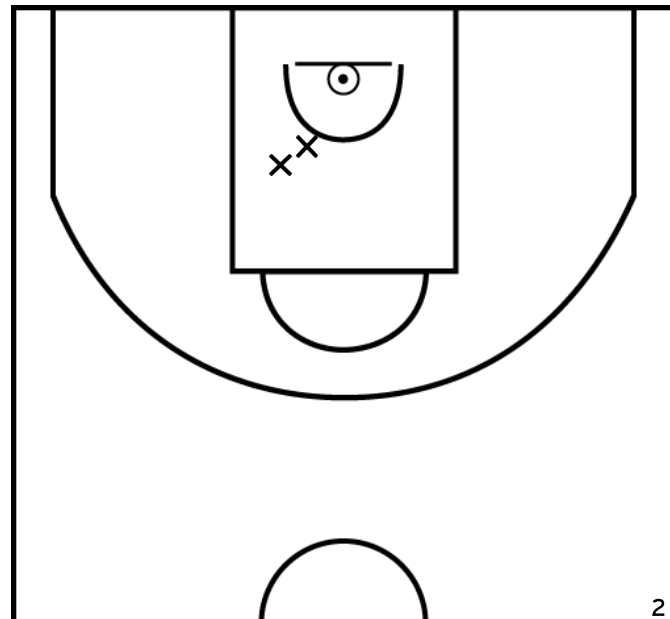
PÉRIODE 2



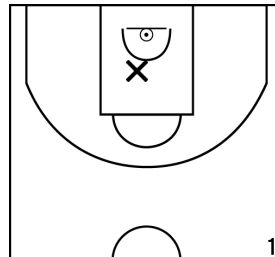
PÉRIODE 4



LEBRU B. - IE - CTC HAUTS DE VILAINE - CHATEAUBOURG BC (A)



PÉRIODE 1



PÉRIODE 3



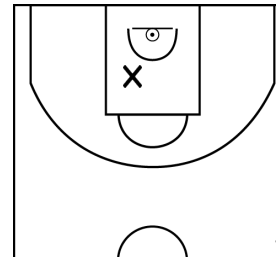
PROLONGATIONS



PÉRIODE 2



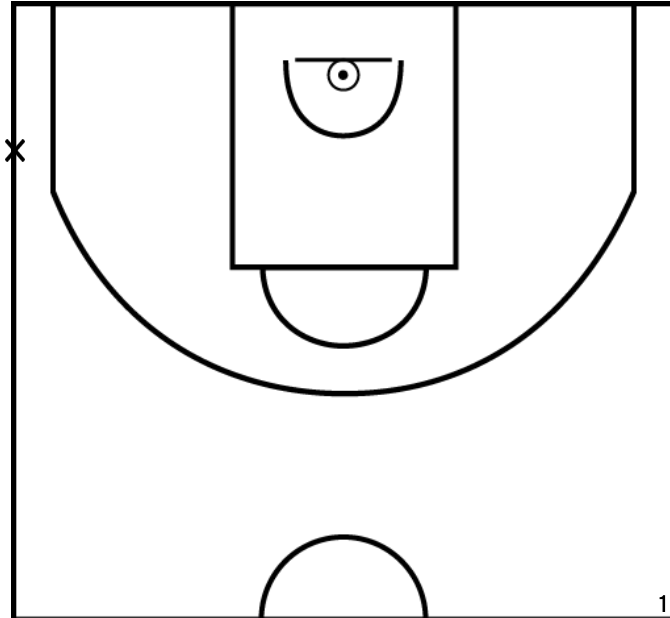
PÉRIODE 4



Rencontre: 247 Date: 06/05/23 Heure: 20:15

Arbitre: LEBouc A

MONLIBERT E. - IE - CTC HAUTS DE VILAINE - CHATEAUBOURG BC (A)



PÉRIODE 1



PÉRIODE 3



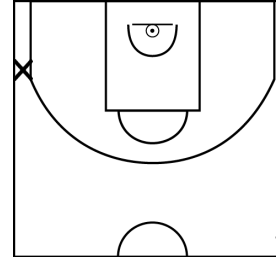
PROLONGATIONS



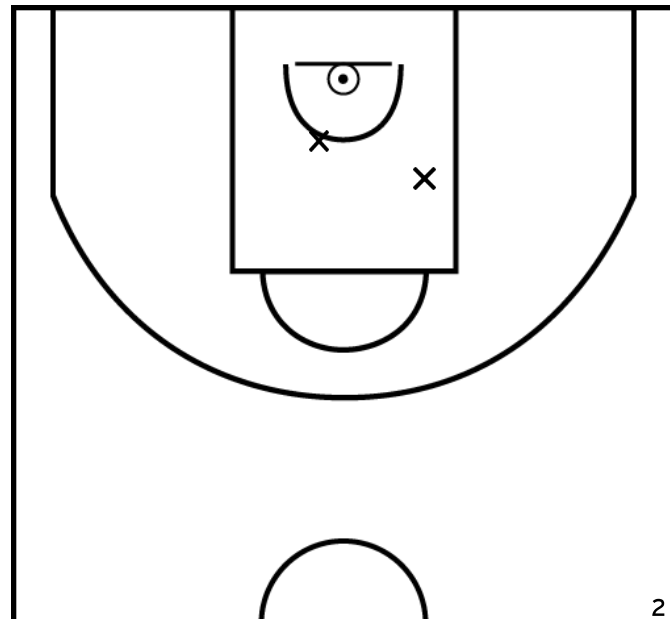
PÉRIODE 2



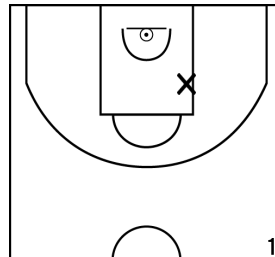
PÉRIODE 4



DENIS L. - IE - CTC HAUTS DE VILAINE - CHATEAUBOURG BC (A)



PÉRIODE 1



PÉRIODE 3



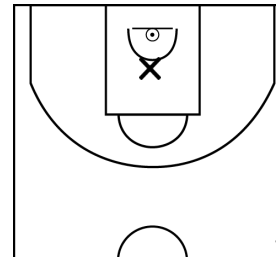
PROLONGATIONS



PÉRIODE 2



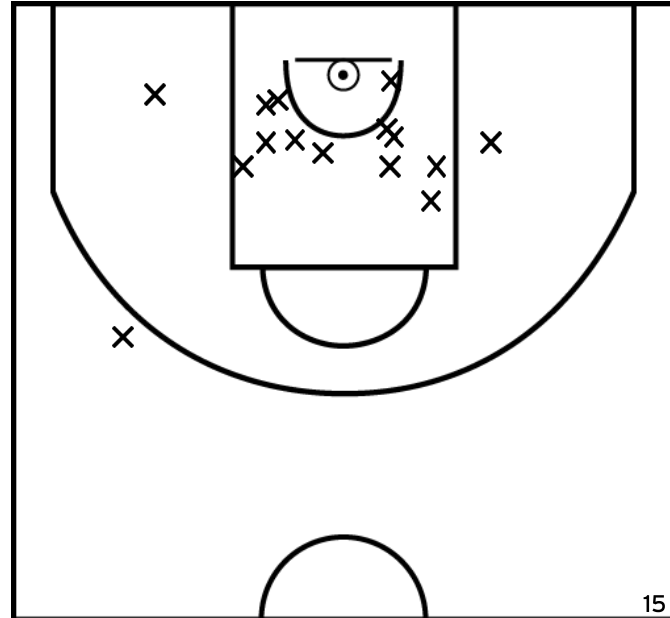
PÉRIODE 4



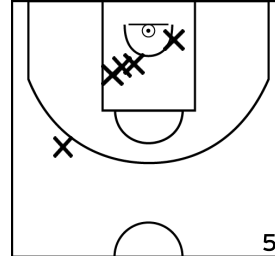
Rencontre: 247 Date: 06/05/23 Heure: 20:15

Arbitre: LBOUC A

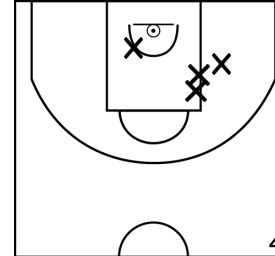
ÉQUIPE ASS OMNI CANTONALE ST JAMES (B)



PÉRIODE 1



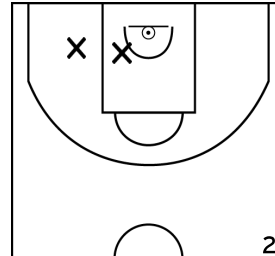
PÉRIODE 3



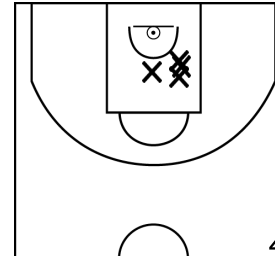
PROLONGATIONS



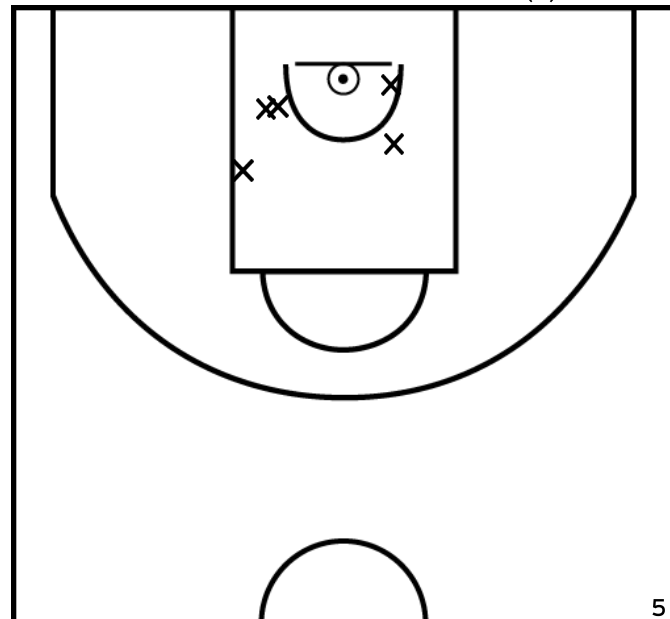
PÉRIODE 2



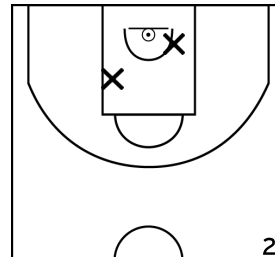
PÉRIODE 4



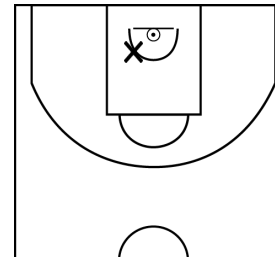
DUBOIS M. - ASS OMNI CANTONALE ST JAMES (B)



PÉRIODE 1



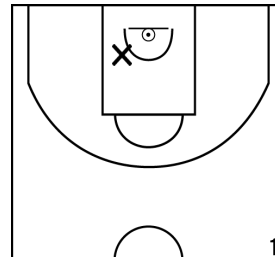
PÉRIODE 3



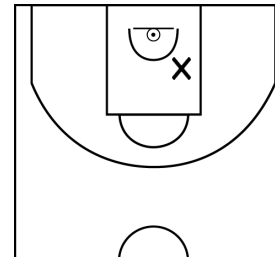
PROLONGATIONS



PÉRIODE 2



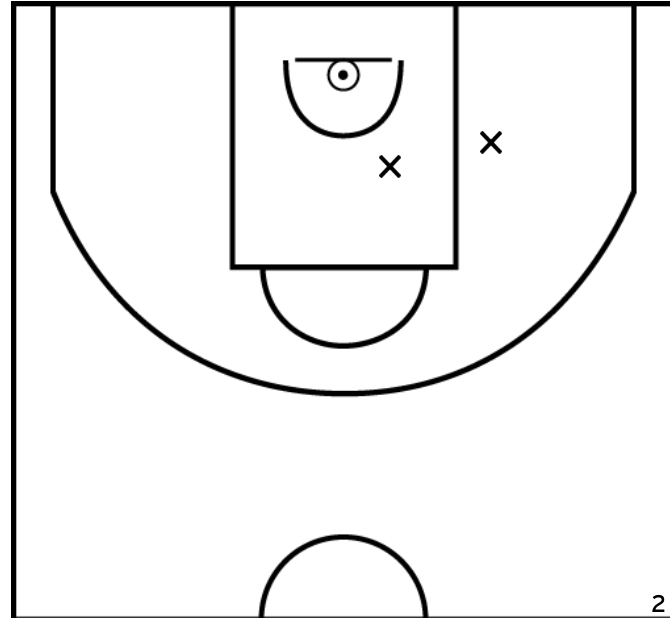
PÉRIODE 4



Rencontre: 247 Date: 06/05/23 Heure: 20:15

Arbitre: LEBOUCA

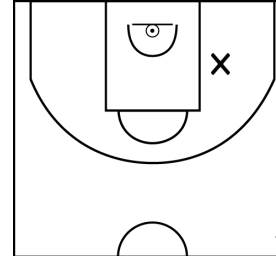
BAILLEUL S. - ASS OMNI CANTONALE ST JAMES (B)



PÉRIODE 1



PÉRIODE 3



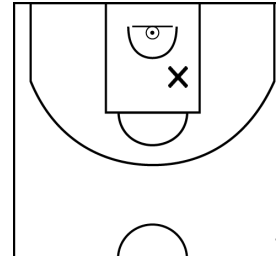
PROLONGATIONS



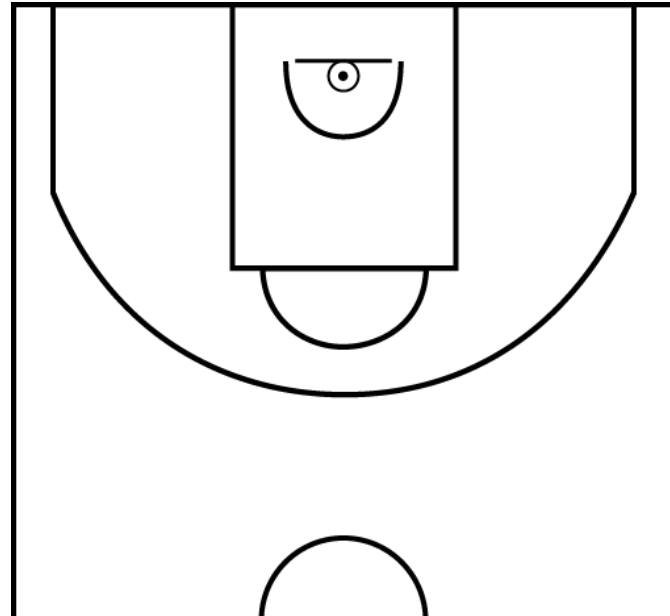
PÉRIODE 2



PÉRIODE 4



LEBRETON J. - ASS OMNI CANTONALE ST JAMES (B)



PÉRIODE 1



PÉRIODE 3



PROLONGATIONS



PÉRIODE 2



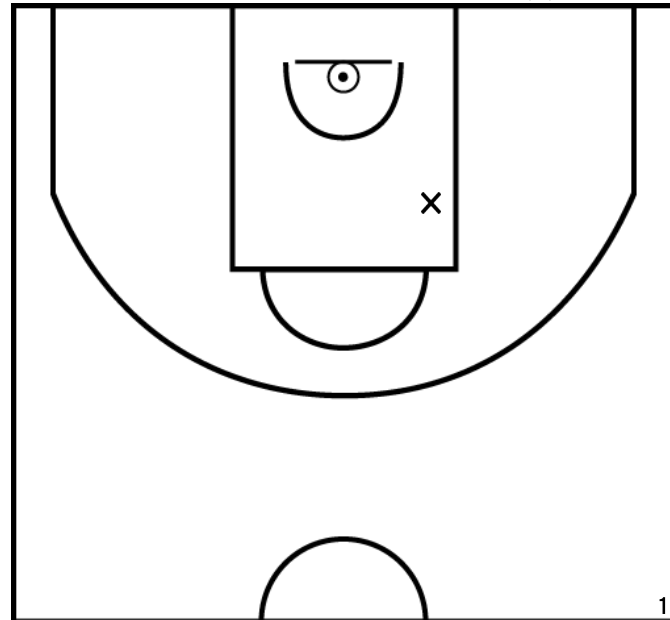
PÉRIODE 4



Rencontre: 247 Date: 06/05/23 Heure: 20:15

Arbitre: LEBouc A

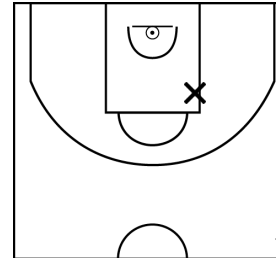
LECANU L. - ASS OMNI CANTONALE ST JAMES (B)



PÉRIODE 1



PÉRIODE 3



PROLONGATIONS



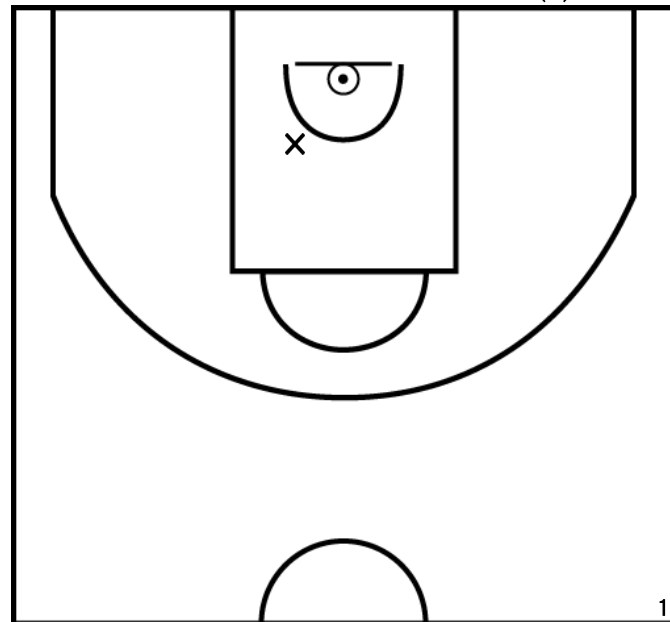
PÉRIODE 2



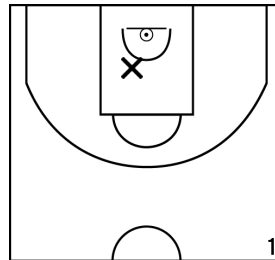
PÉRIODE 4



PERRIER G. - ASS OMNI CANTONALE ST JAMES (B)



PÉRIODE 1



PÉRIODE 3



PROLONGATIONS



PÉRIODE 2



PÉRIODE 4





Rencontre: 247 Date: 06/05/23 Heure: 20:15

Arbitre: LEBouc A

ROYER K. - ASS OMNI CANTONALE ST JAMES (B)



PÉRIODE 1



PÉRIODE 3



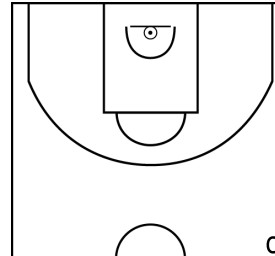
PROLONGATIONS



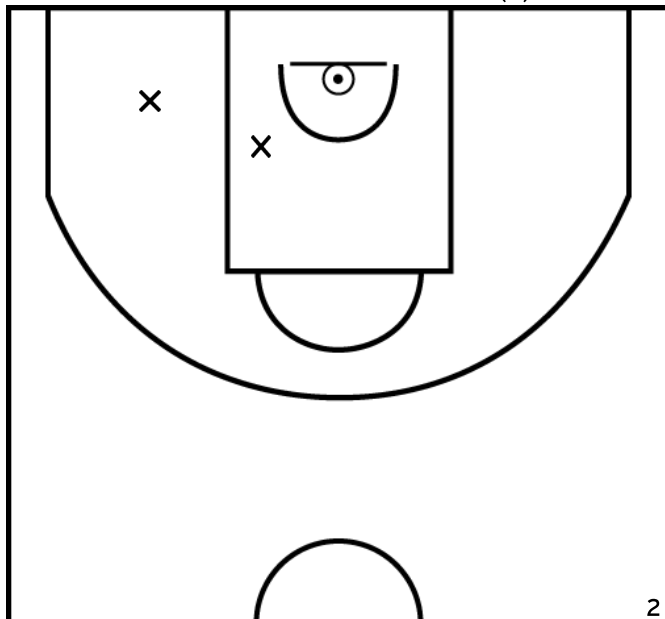
PÉRIODE 2



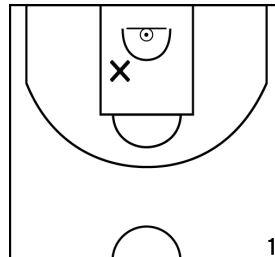
PÉRIODE 4



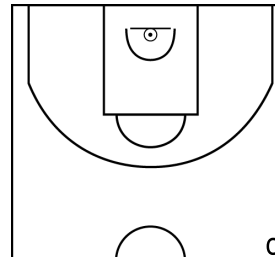
SIMON T. - ASS OMNI CANTONALE ST JAMES (B)



PÉRIODE 1



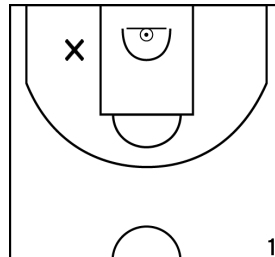
PÉRIODE 3



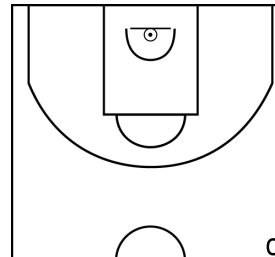
PROLONGATIONS



PÉRIODE 2



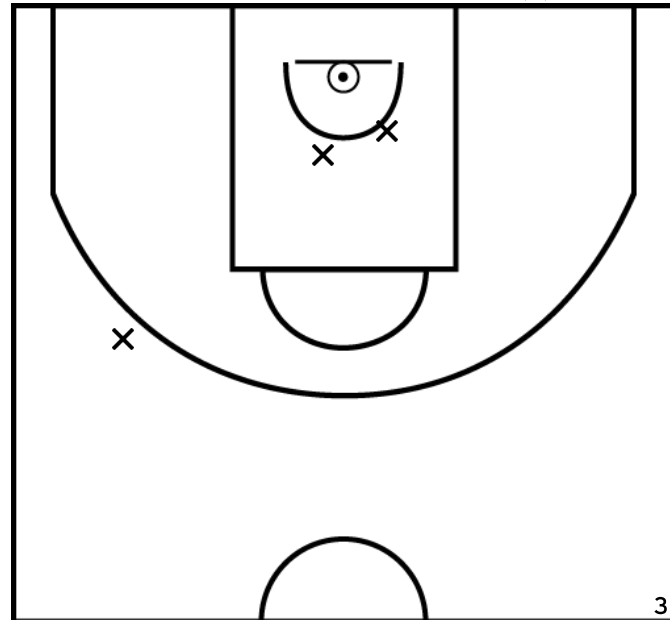
PÉRIODE 4



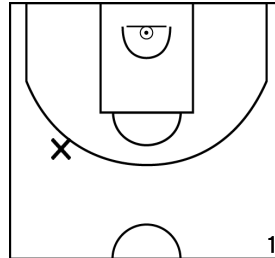
Rencontre: 247 Date: 06/05/23 Heure: 20:15

Arbitre: LEBouc A

BIGRET R. - ASS OMNI CANTONALE ST JAMES (B)



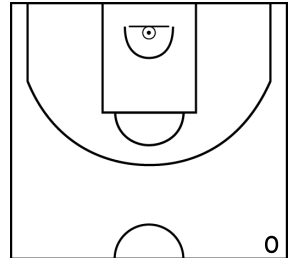
PÉRIODE 1



PÉRIODE 3



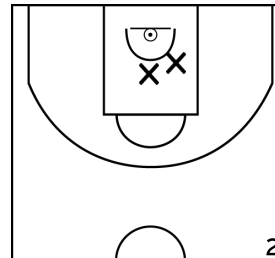
PROLONGATIONS



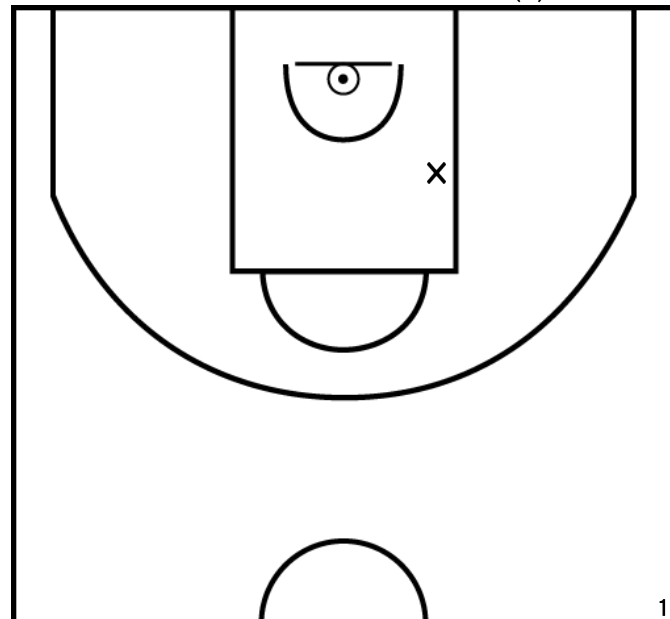
PÉRIODE 2



PÉRIODE 4



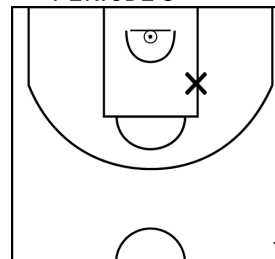
HARDY G. - ASS OMNI CANTONALE ST JAMES (B)



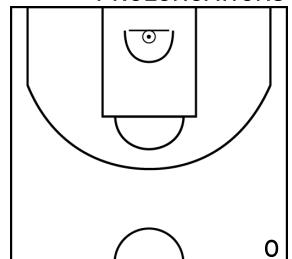
PÉRIODE 1



PÉRIODE 3



PROLONGATIONS



PÉRIODE 2



PÉRIODE 4

